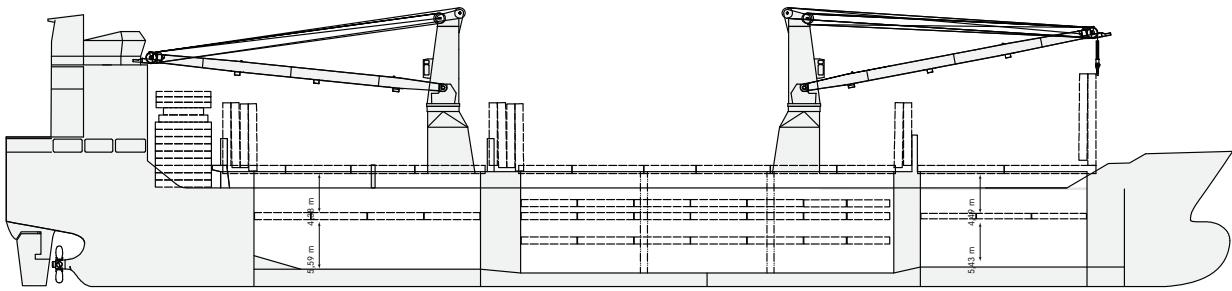


LONG TERM T/C VESSEL

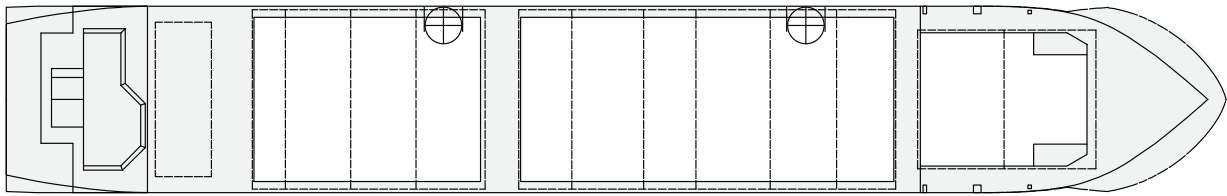
CLASS		
Classification	Highest ABS American Bureau of Shipping	
Ice-Class	Finnish/ Swedish 1A	
Great lakes fitted	Yes	
PRINCIPAL DIMENSIONS		
Length over all	138.07 m	
Breadth moulded	21.00 m	
Height hold as SID	Hold 1:	10.53 m
	Hold 2:	11.18 m
	Hold 3:	10.77 m
Height lower hold as TWD	Hold 1:	5.38 m
	Hold 2:	5.95 m
	Hold 3:	5.54 m
Height tween deck as TWD	Hold 1:	4.55 m
	Hold 2:	4.43 m
	Hold 3:	4.43 m
Summer draft	8.00 m	
GT	Abt. 9,627	
NT	Abt. 4,261	
DEADWEIGHT all told	12,696 mt	(excl TWD)
CAPACITY		
Grain - bale	563,340 cbft	/15,952 m ³
FLOOR SPACE		
Tank top	1,425 m ²	
Tween deck	1,432 m ²	
Weather deck	1,480/1,820 m ²	
AIR CHANGES (basis empty holds)		
Hold 1	Abt. 5 x p/h	
Hold 2 + 3	Abt. 6 x p/h	
CONTAINER INTAKE		
Total	665 TEU	
HATCHES		
Weather deck	Hold 1:	18.75 x 15.00 m /10.06
	Hold 2:	42.00 x 17.50 m
	Hold 3:	25.50 x 17.50 m
Tween deck	Hold 1:	18,75 x 15,01 m /10.06
	Hold 2:	42.00 x 17.50 m
	Hold 3:	25.50 x 17.50 m
	Consisting: 14 steel pontoons	
Bulkheads/compartments	Removable pontoons for up to 2 compartments at Hold 2	
MAXIMUM LOAD		
Weather deck hatch covers	1.75 t/m ²	payload
Tweendeck hatch covers	4.00 t/m ²	
Tank top	16.00 t/m ²	
DECK CRANES		
Position	2 x situated on port side	
Tons /reach	180 mt SWL	combinable up to 360 mt



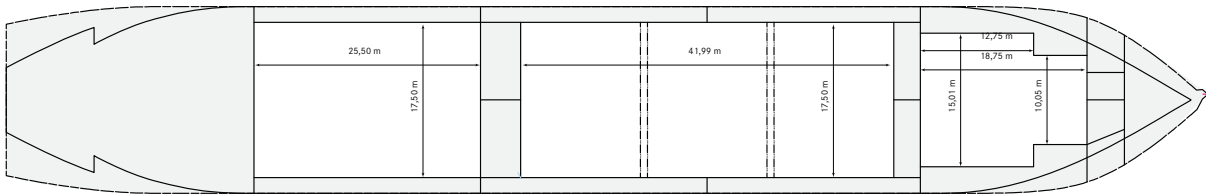
2008 COE LUISA



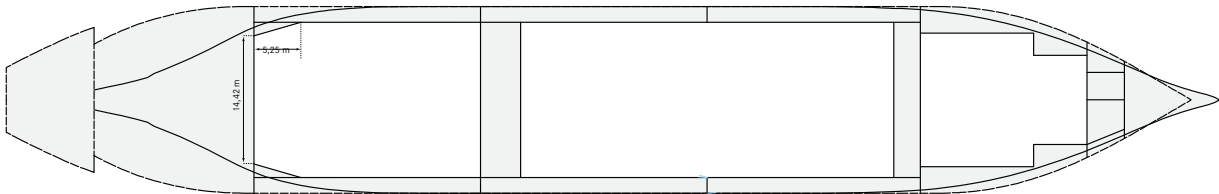
WEATHER DECK



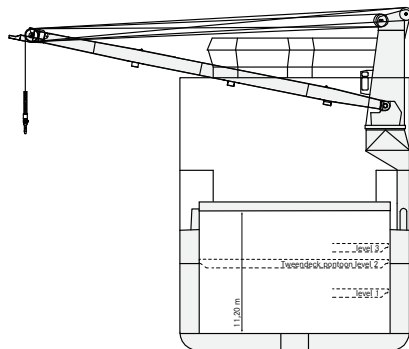
TWEEN DECK



TANK TOP



CROSS SECTION



LONG TERM T/C VESSEL

These particulars are believed to be correct, but without guarantee, and they must not be used as basis for Charter Parties or contracts without explicit written authority. For more information please contact amsterdam@spliothoff.com